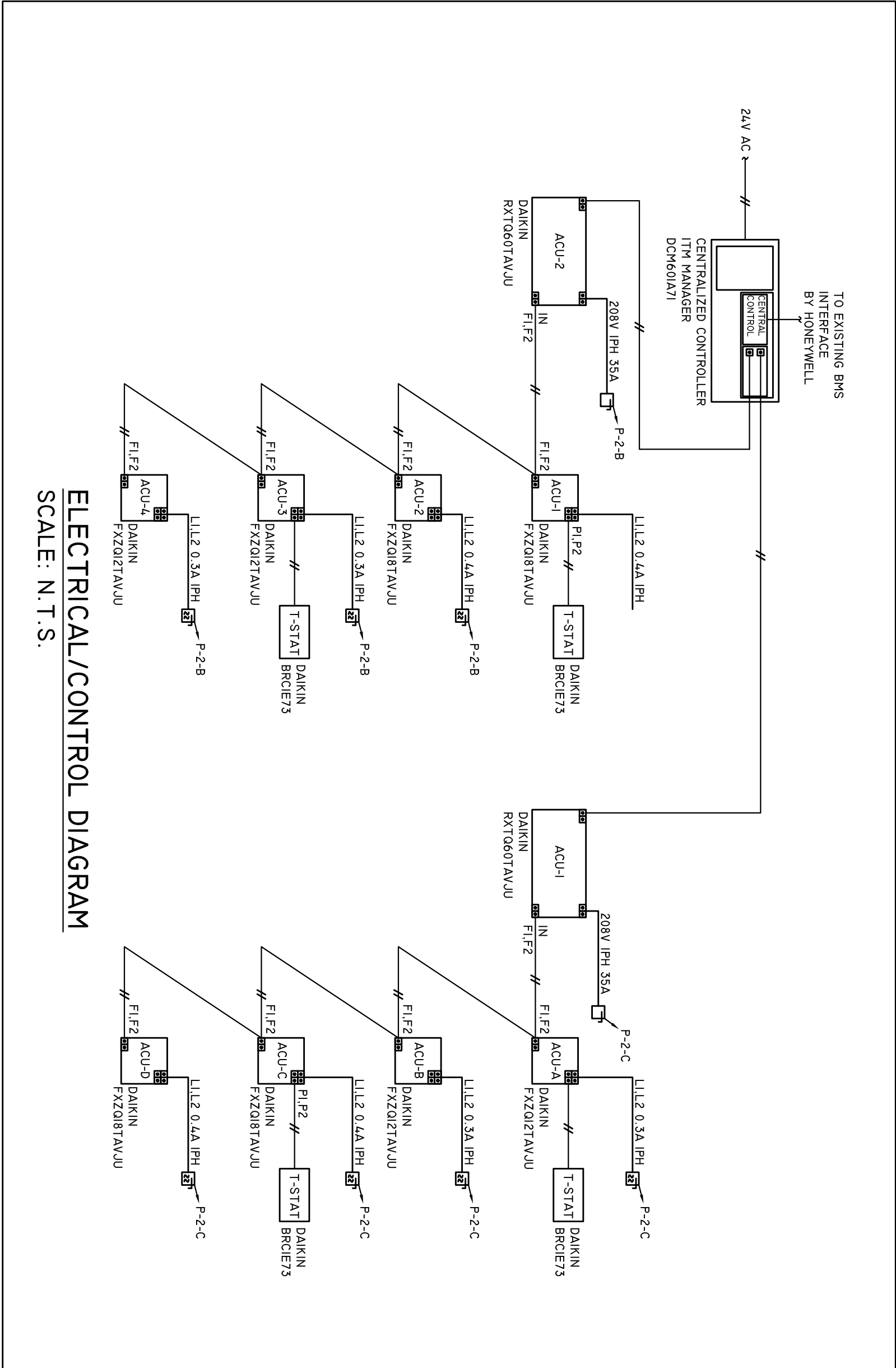


SCHEDULES

AIR CONDENSING UNIT SCHEDULE												
TAG NO.	AREA SERVED	MODEL	CAPACITY TONS	EFFICIENCY		CAPACITY		REFRIGERANT	ELECTRICAL		UNIT WEIGHT	REMARKS
				IEER	COP	COOLING	HEATING		VOLTS	PHASE		
ACU-1	CLASSROOM 1 & 2	RTX000-TAVJU	5 TON	18.0	-	57371 BTU/H	52868 BTU/H	RU0A	208	1-PH	224.9	LBS 2.4.5
ACU-2	MEDICAL AS. SKILLS LAB/NURSING SKILLS LAB	RTX000-TAVJU	5 TON	18.0	-	57424 BTU/H	57492 BTU/H	RU0A	208	1-PH	224.9	LBS 2.4.5

VARIABLE AIR CONDITIONING EVAPORATOR UNIT SCHEDULE															
TAG NO	AREA SERVED	OA	TOTAL CFM	INDOOR EVAPORATOR UNIT								NOTES			
				DAKIN				ELEC. CHARACTERISTICS							
				MODEL NO.	COOLING	HEATING	SHBH	POWER	MCA	MFA	FLA		WEIGHT (LBS)		
AC-A	CLASSROOM 1	0	353	FZX02TAVJU	11,944	12,600	-	-	208/PH	-	-	0.4	36.4	12.3.5	
AC-B	CLASSROOM 1	0	353	FZX02TAVJU	11,944	12,600	-	-	208/PH	-	-	0.4	36.4	12.3.5	
AC-C	CLASSROOM 2	0	511	FZX08TAVJU	18,086	18,242	-	-	208/PH	-	-	0.6	41.9	12.3.5	
AC-D	CLASSROOM 2	0	511	FZX08TAVJU	18,086	18,242	-	-	208/PH	-	-	0.6	41.9	12.3.5	
AC-1	NURSE SKILLS LAB	0	511	FZX08TAVJU	18,086	12,600	-	-	208/PH	-	-	0.6	41.9	12.3.5	
AC-2	NURSE SKILLS LAB	0	511	FZX08TAVJU	18,086	12,600	-	-	208/PH	-	-	0.6	41.9	12.3.5	
AC-3	MED ASSIT. SK. LAB	0	353	FZX02TAVJU	11,944	18,242	-	-	208/PH	-	-	0.4	36.4	12.3.5	
AC-4	MED ASSIT. SK. LAB	0	353	FZX02TAVJU	11,944	18,242	-	-	208/PH	-	-	0.4	36.4	12.3.5	
NOTES: 1) REMOTE WALL CONTROLLER, 2) BACKET INTERFACE W/ EXISTING B.M.S., 3) CONDENSATE PUMP, 4) WALL MOUNT BRACKETS, 5) FACTORY START UP															
EQUIPMENT BASED UPON DAKIN MANUFACTURE															

DETAILS



REV	DATE	DESCRIPTION

SHEET TITLE:

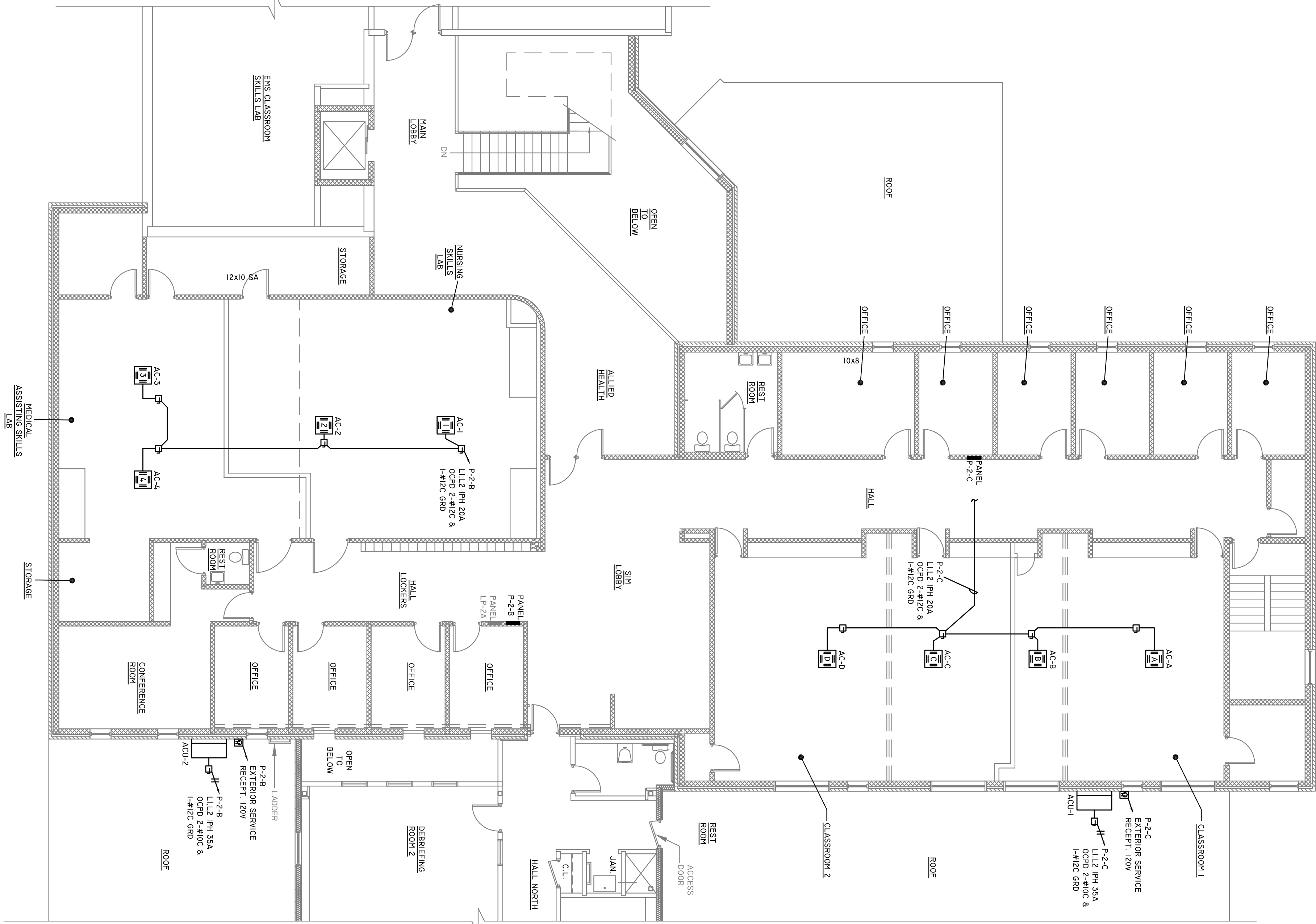
ELECTRICAL  
POWER PLAN

APRIL 02, 2019

SCALE: AS NOTED

E-1

BREM PROJECT#: PT3064  
AE PROJECT#: 1902-18



SECOND FLOOR PLAN  
SCALE: 1/8"=1'-0"